

CA118F

Mobile Digital FPD C-arm System

The state-of-art dynamic flat panel detector

Larger view
Higher resolution
Lower noise

Advanced digital image technology with humanized design

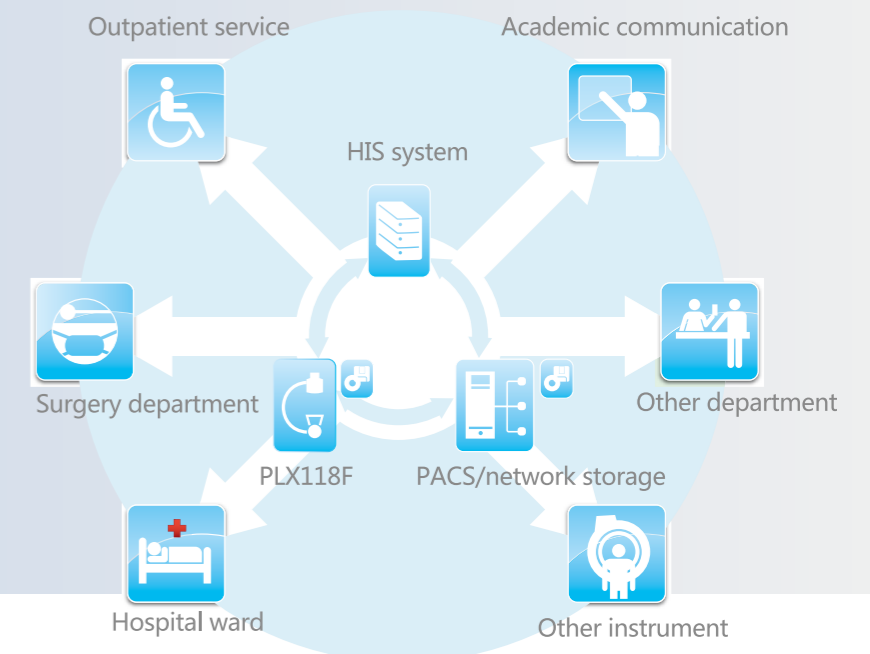
Friendly user interface

Human graphic LCD touch-screen with accurate APR parameters setting realizes convenient operation.



- Hand controller on C-arm stand controls the mechanical and collimator movement, improves your work flow even you are away from the unit.
- RCDP - rapid calculate display platform
GPU-based dynamic real-time image processing technology makes it easy to get sharp image of various body parts.

- Seamless connection with cloud PACS system for information sharing and remote diagnosing.
- Remote maintenance.
- Self-diagnosis with error-code displaying.



Lower dose Sharper image.

- Digital pulse mode to ensure lower dose and sharper image.
- Intelligent variable-frequency pulse technology ensures high quality X-ray at efficient dose.

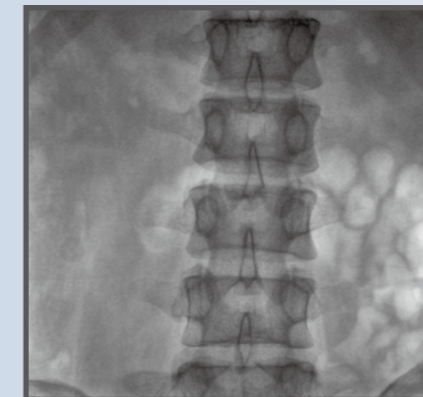
- Perfect digital imaging chain makes the routine operation easily as follow:

- | | |
|---------------------------|-------------------------------|
| ✓ Orthopedics department | ✓ Spine surgery |
| ✓ General surgery | ✓ Pain surgery |
| ✓ Orthopedic surgery | ✓ Gastroenterology department |
| ✓ Traumatology department | ✓ Gynecology |
| ✓ Urinary surgery | |

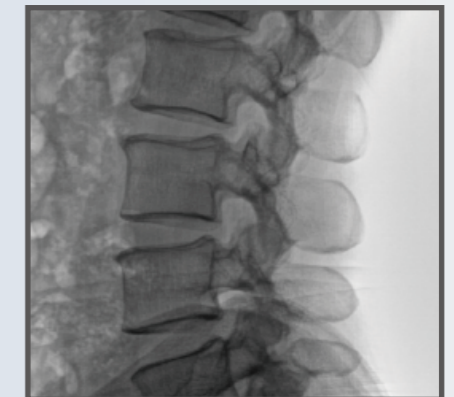
- DSI(Digital Spot Film)
- Red light cross localization



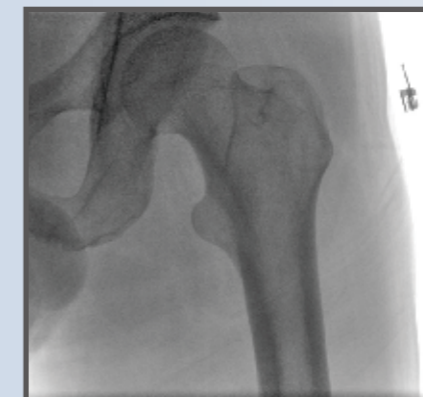
✓ Lumbar fluoroscopy



✓ Lumbar vertebrae fluoroscopy



✓ Pelvis fluoroscopy



✓ Limbs fluoroscopy



High-quality images ensure the accurate diagnosis.

Faster positioning Higher efficiency

Free rotation without dead space



360 °horizontal movement to satisfy complex positioning

Unique design of electric auxiliary support arm make the movement of machine more stable.



Convenient and reliable C-arm sliding with counter-balance



Wide range electric elevating meet different operating tables

- Integrated generator with compact C-arm frame suitable for various operating rooms



Large forward, backward and swing movement around axis.

Item	CA118F
Power Output	5kW
Inverter Frequency	110kHz
Continuous Fluoroscopy Mode (manual & automatic)	Tube Voltage: 40–120kV
	Tube Current: 0.3–4mA
Pulse Fluoroscopy	Tube Voltage: 40–120kV
	Tube Current: 0.3–30mA
	Intelligent variable–frequency technology
Photography Mode	Tube Voltage: 40–120kV
	Tube Current: 25–100mA
	mAs: 1.0mAs–280mAs
Counter balance	