

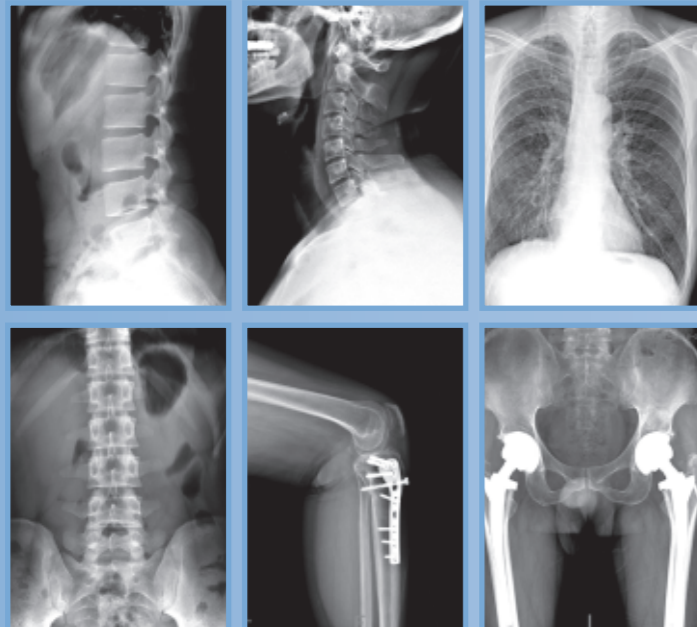
TR6500

Medical Diagnostic X-Ray Equipment

TR6500B

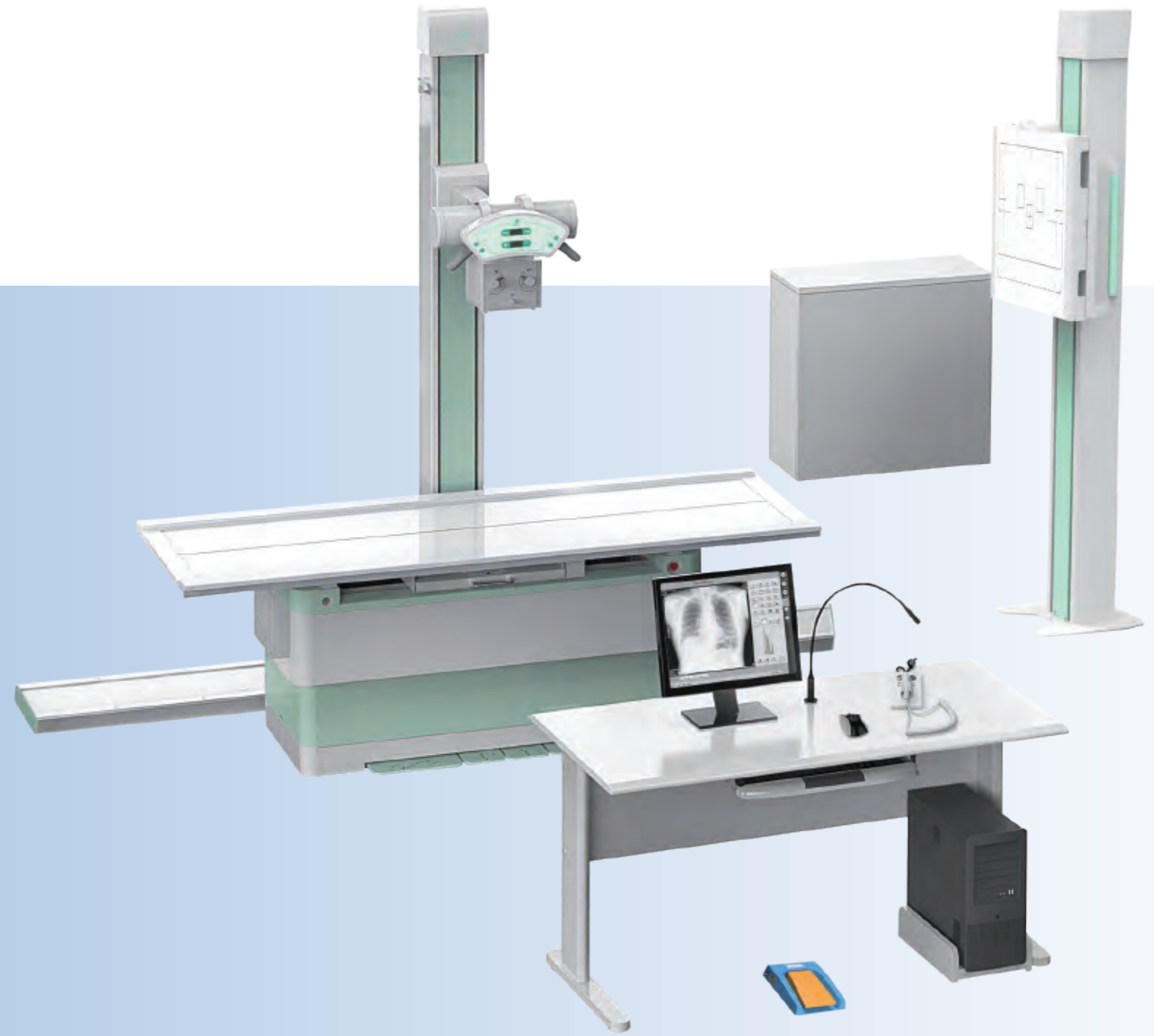
Medical Diagnostic X-Ray Equipment

The TR6500B high frequency digital x-ray equipment can be applied to satisfy the radiographic needs of different body parts: head, chest, abdomen, waist, thorax, pelvis, and limbs. The TR6500B is also capable of serving different positions: lay decubitus, normotopia, side position, etc. It is designed as a fixed digital x-ray machine, though it can also be compacted into limited spaces, like buses and trucks.



Sharp Image Support Your Accurate Diagnose

63KW generator makes it different, the generator assures the best image in every operating condition along with reduced patient dose and extend X-ray tube lifetime.



- The **TR6500B** high frequency digital x-ray equipment can be applied to satisfy the radiographic needs of different body parts: head, chest, abdomen, waist, thorax, pelvis, and limbs.
- The **TR6500B** is also capable of serving different positions: lay decubitus, normotopia, side position, etc.
- It is designed as a fixed digital x-ray machine, though it can also be compacted into limited spaces, like buses and trucks.

DR DETECTOR

Flat panel detector improve your workflow, exam speed and comfort with efficiency
 A-si detector with CSI screen, excellent spatial resolution
 Active area: 17" x 17"

X-RAY SOURCE ASSEMBLY

Our generator provide the right amount of penetration, reducing exposure times and retakes. Automatic exposure control (AEC) enables auto selection of radiographic factors, saves time, eliminates retakes, increases diagnostic capability and lowers the radiation dose. (Optional)

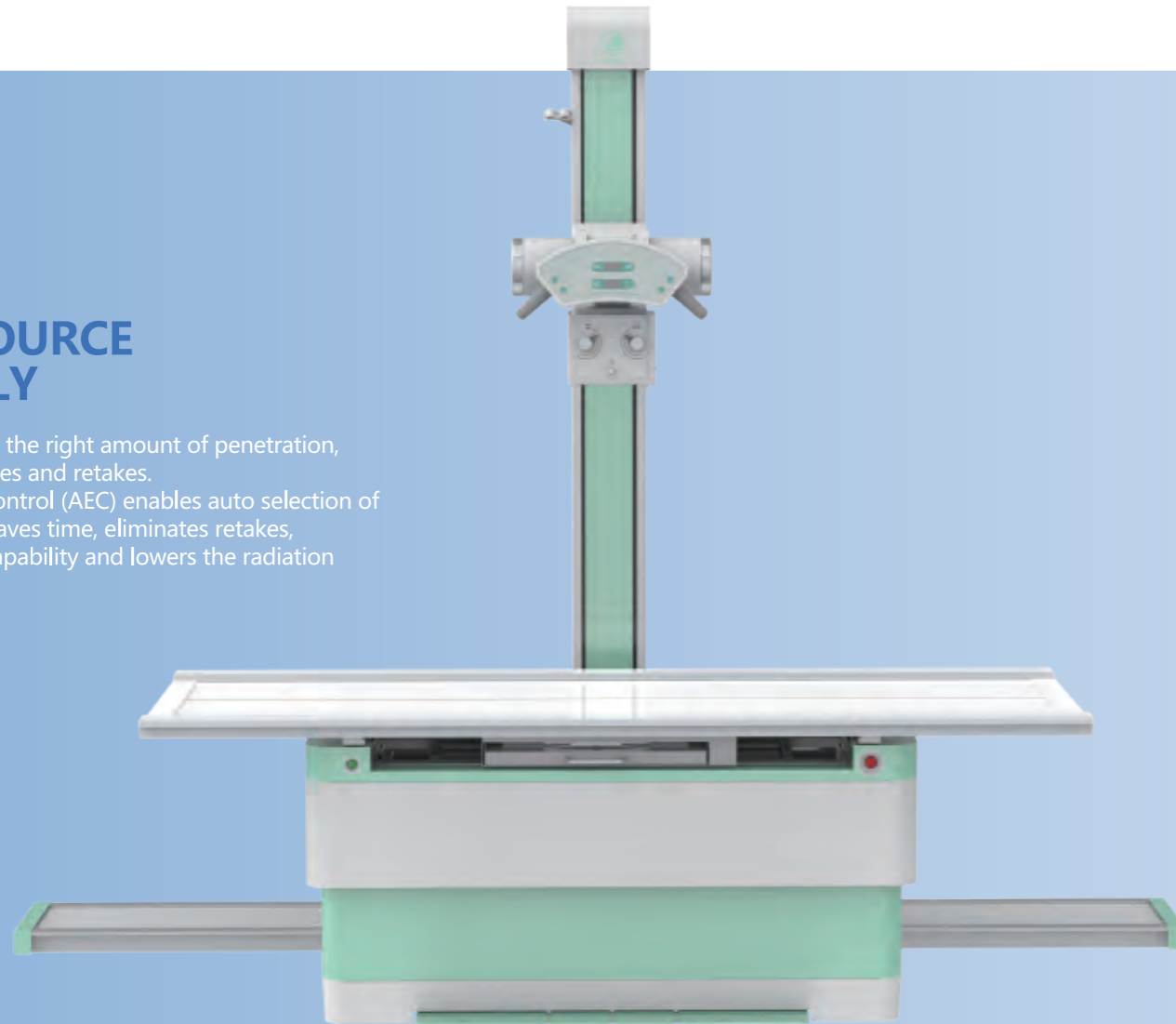
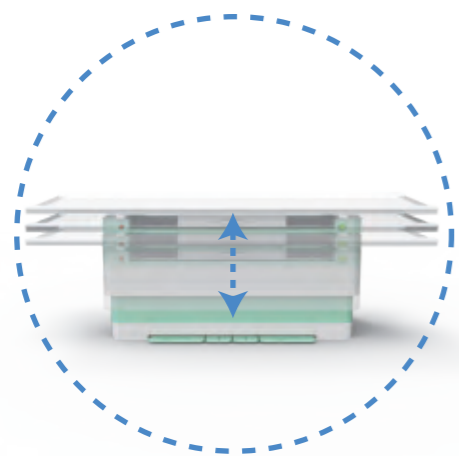
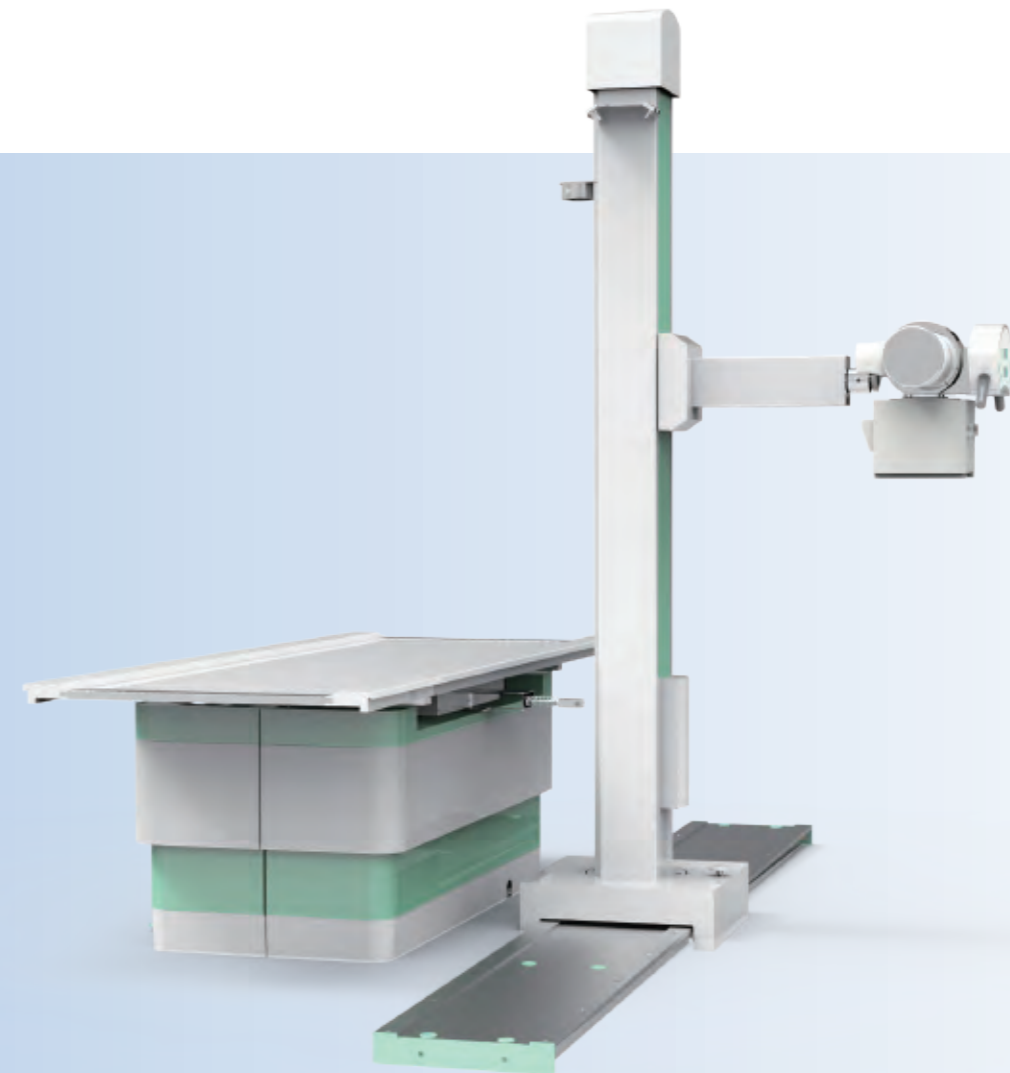
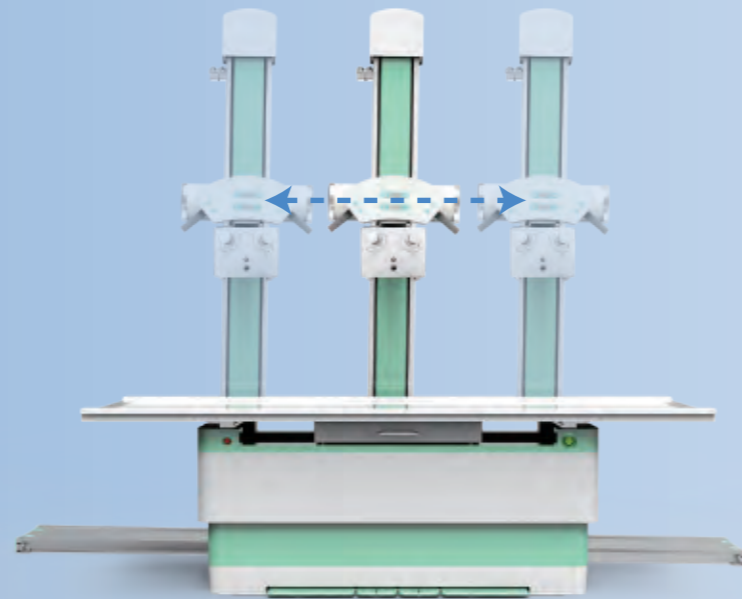
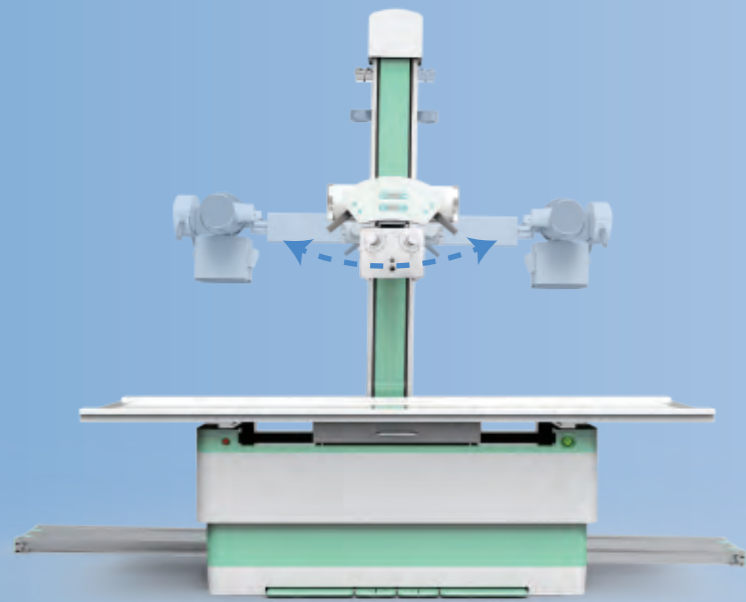


Image acquisition workstation DRA20

Computer system
 Processor: Intel Core Quad Core Processor i5-6500 (3.20 GHz)
 Memory: 4 GB DDR3L
 Hard disk: 1T SATA (7200rpm)
 Optical drive: DVD-RW disc burner





Technical Parameters

Item	Parameters
Output Power	63KW
Inverter Frequency	440kHz
Dual-focus	Small focus: 0.6; Large focus: 1.2
Tube Voltage	40-150KV
Tube Current	10-800mA
Digital Detector	Flat panel detector