



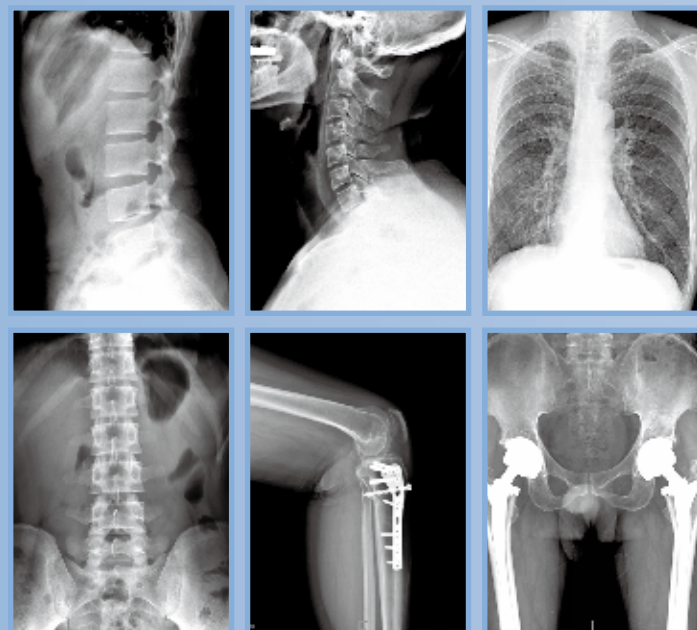
UR8500C/D

High Frequency Digital Radiography System

UR8500C/D

High Frequency Digital Radiography System

- The high imaging output of 55kW and 65kW allows short-time radiography, virtually eliminating any motion blurring.
- Flexible mechanical design ensures the intelligent, friendly and convenient operation.
- Powerful network function satisfy the requirements all levels of hospitals.
- Intelligent and friendly user interface make it easy for new operator.
- Convenient image processing system and high definition medical display system provide efficient and accurate diagnosis.



SHARP IMAGE SUPPORT YOUR ACCURATE DIAGNOSE

55/65 kW generator make us different, our generator assures the best image in every operating condition along with reduced patient dose and extend X-ray tube lifetime.



X-RAY SOURCE ASSEMBLY

Our generator provide the right amount of penetration, reducing exposure times and retakes. Automatic exposure control (AEC) enables auto selection of radiographic factors, saves time, eliminates retakes, increases diagnostic capability and lowers the radiation dose. (Optional)

MECHANICAL SYSTEM

Multi-automatic protection and error code indicator ensure convenient maintenance.

Attractive design U-arm frame, fully automatic motorized movement, widely used for standing and decubitus positions.

Safety features protect against collision with patient and obstacles.
Multi kinds of control method provide instant access to patient data and key parameters.



OPTIONAL: U-ARM RADIOGRAPHY TABLE

Equipped with build-in battery for motorized movement.
Infrared sensor design, feet trigger, releases your hands.
Low-absorption tabletop materials.
Sensor type electromagnetic lock for table top movement.
All-direct movement tabletop, easy to position.



DR DETECTOR

Flat panel detector improve your workflow, exam speed and comfort with efficiency
A-si detector with CSI screen, excellent spatial resolution
Active area: 17" x 17"



Technical Parameters

Model	UR8500C	UR8500D
Power Output	50kW	65 kW
Frequency	260kHz	260kHz
Tube Current	10~650mA	10~850mA
Tube Voltage	40~150kV	40~150kV
mAs	1~1000mAs	1~1000mAs
Exposure Time	0.001~6.3s	0.001~6.3s
Focus Size	0.6/1.2	0.6/1.2
Detector Type	Flat panel detector	Flat panel detector
Vision Size	17"x17"	17"x17"
Spatial Resolution Limit	3.7Lp/mm	3.7Lp/mm
Pixel Size	3Kx3K	3Kx3K
Power	380V ,50Hz	380V ,50Hz